

The logo for YPP (York Properties Partners) is located in the top right corner. It consists of the lowercase letters 'ypp' in a white, sans-serif font, set against a dark purple, downward-pointing arrow shape.The main image shows a multi-story building with a classical facade. The ground floor is dark grey with a prominent entrance on the left marked with the number '7'. To the right of the entrance is a storefront with large windows and red awnings. The upper floors are light-colored with tall, narrow windows and decorative elements. A modern building is visible in the background to the right. A large purple graphic overlay in the bottom right corner contains the text '7 South Parade Floor Plans' in white.

7 South Parade Floor Plans

The new way of living.

Without a doubt, South Parade is one of our top locations in Leeds. Right in the heart of the city centre, behind the famous avenue that is The Headrow, it sits just a 7 minute walk from Leeds Train Station, Trinity Shopping Centre and university campuses!

On the edge of the financial district, South Parade is arguably the most sought after location in Leeds with demand rising year after year. There's an array of fascinating architecture in the area to keep you amused day after day.

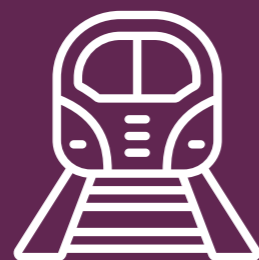
Not only do you have the amenities of the city centre right on your doorstep, from shops, cinemas and bowling alleys, to bars, cafes and restaurants, but you've got Park Square just around the corner. One of the city's largest green spaces, which it's perfect for summer.

Last but not least, with all utility bills and internet included, plus lift access and a secure code entry, this building has

Building features.



0.4km from Leeds
Beckett University



0.4km from
Train Station



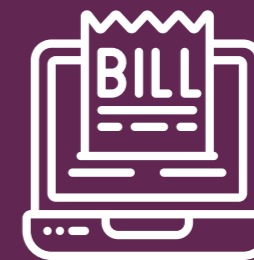
City centre
location



Secure
code entry



Lift access



All bills
included



Internet
included

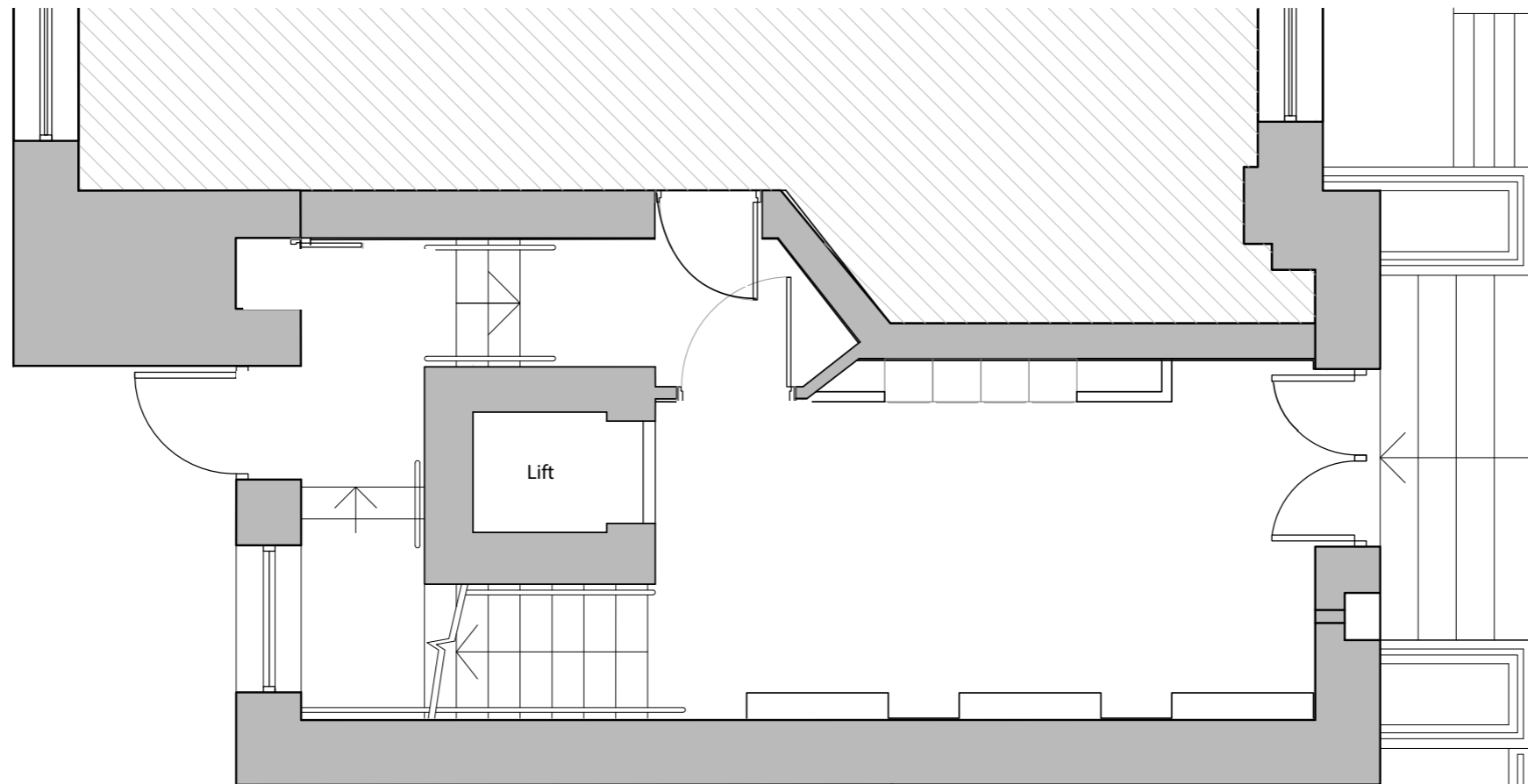
7 South Parade

G



Ground Floor

7 South Parade, Leeds,
LS1 5BB



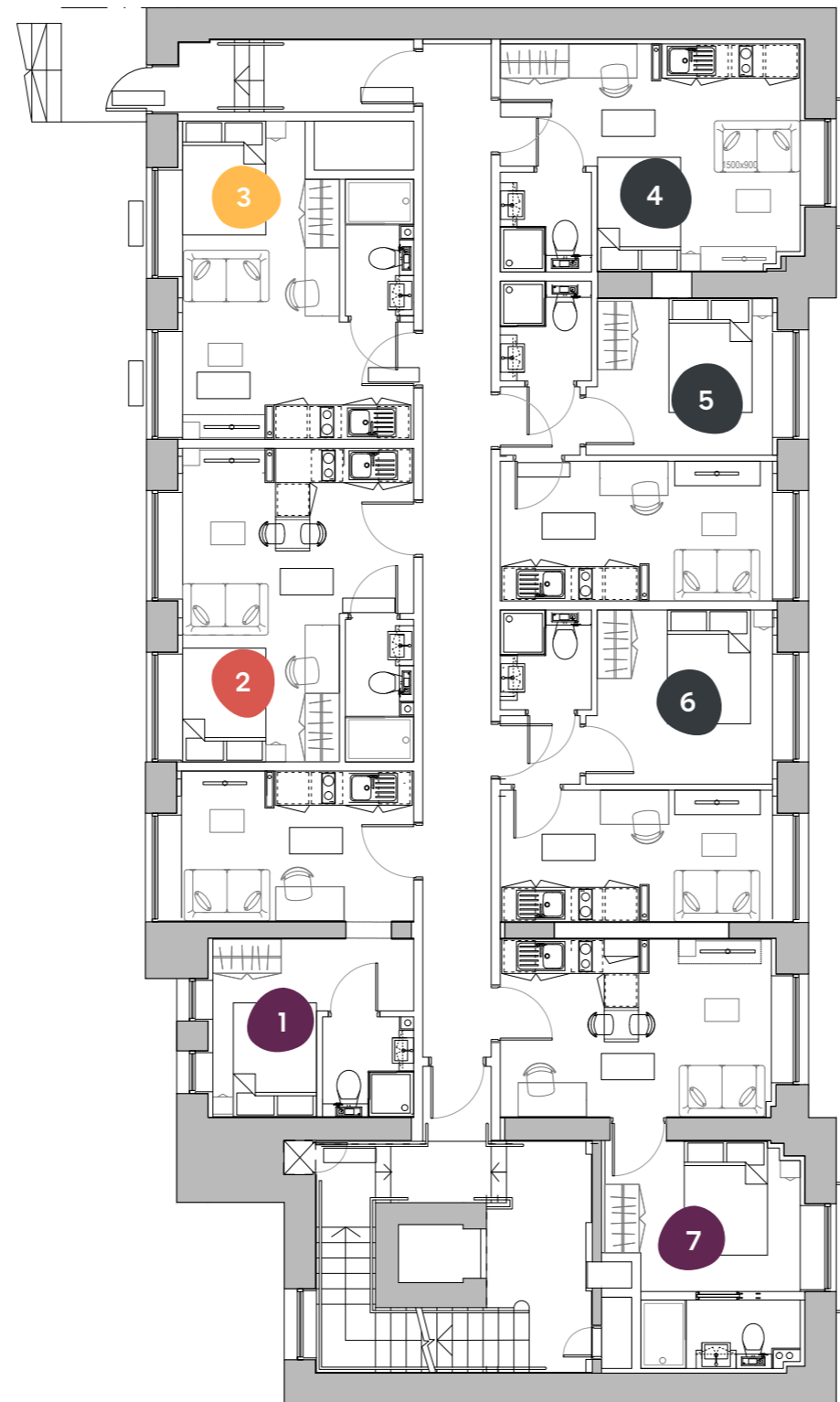
7 South Parade


1



First Floor

7 South Parade, Leeds,
LS1 5BB



-  Superior
-  Deluxe
-  Executive
-  Premium
-  Classic

Flat	Size (sqm)
1	22.82
2	22.30
3	21.03
4	20.85
5	25.82
6	26.11
7	28.20

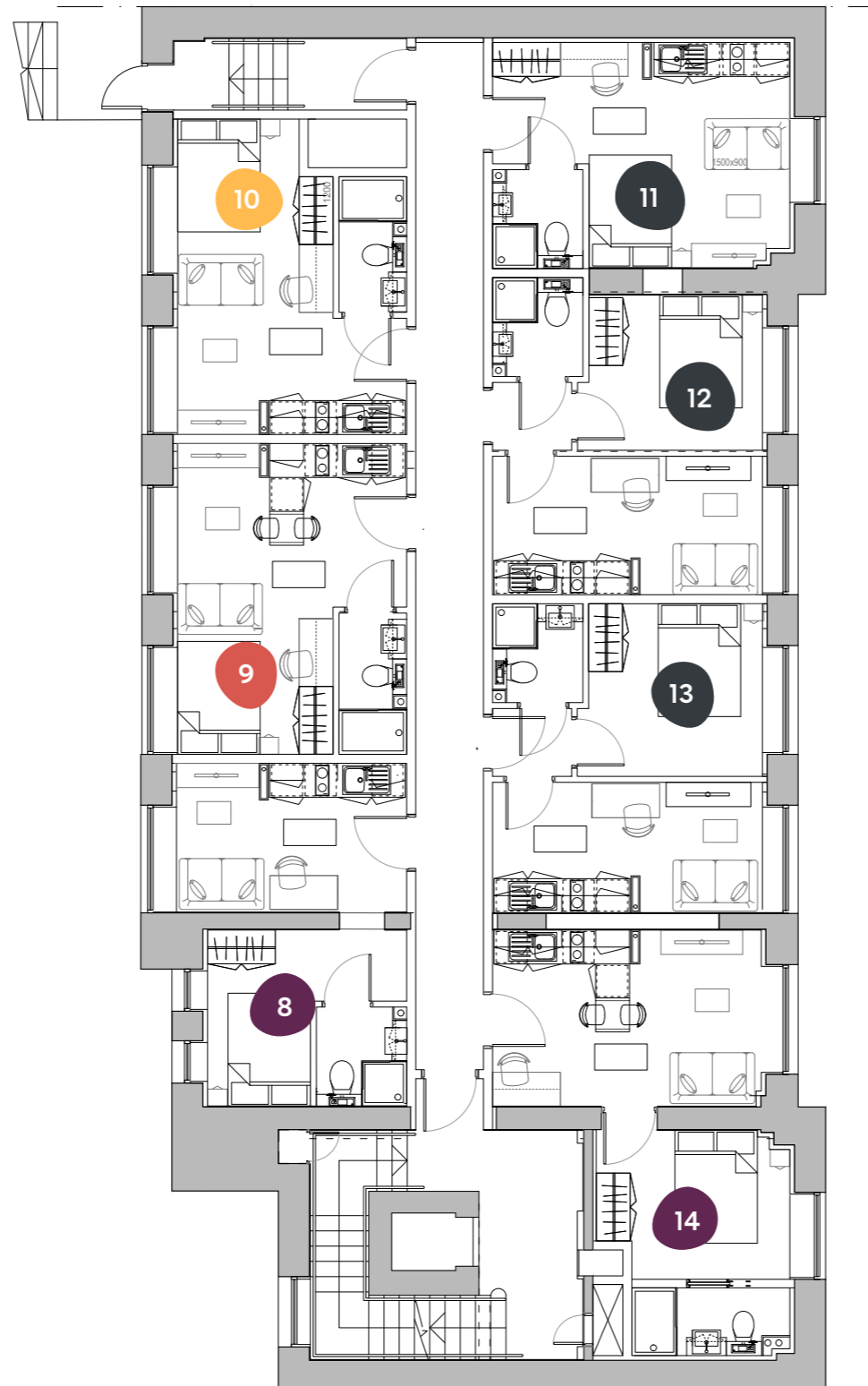
7 South Parade

2



Second Floor

7 South Parade, Leeds,
LS1 5BB



- Superior
- Deluxe
- Executive
- Premium
- Classic

Flat Size (sqm)

8	22.82
9	22.31
10	21.83
11	20.89
12	25.82
13	26.11
14	28.27

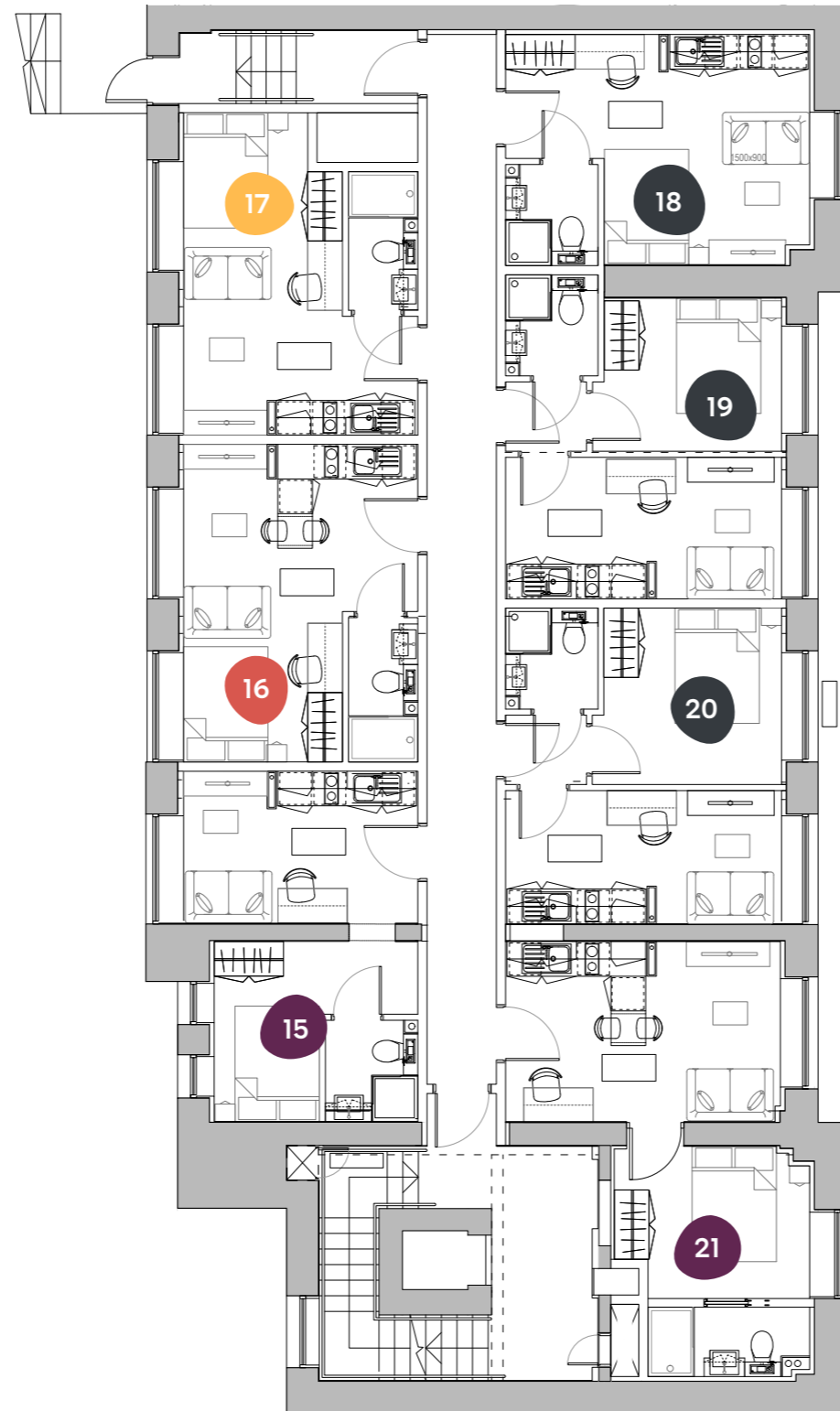
7 South Parade

3



Third Floor

7 South Parade, Leeds,
LS1 5BB



-  Superior
-  Deluxe
-  Executive
-  Premium
-  Classic

Flat Size (sqm)

15	22.77
16	22.31
17	21.03
18	20.85
19	25.52
20	26.11
21	28.13

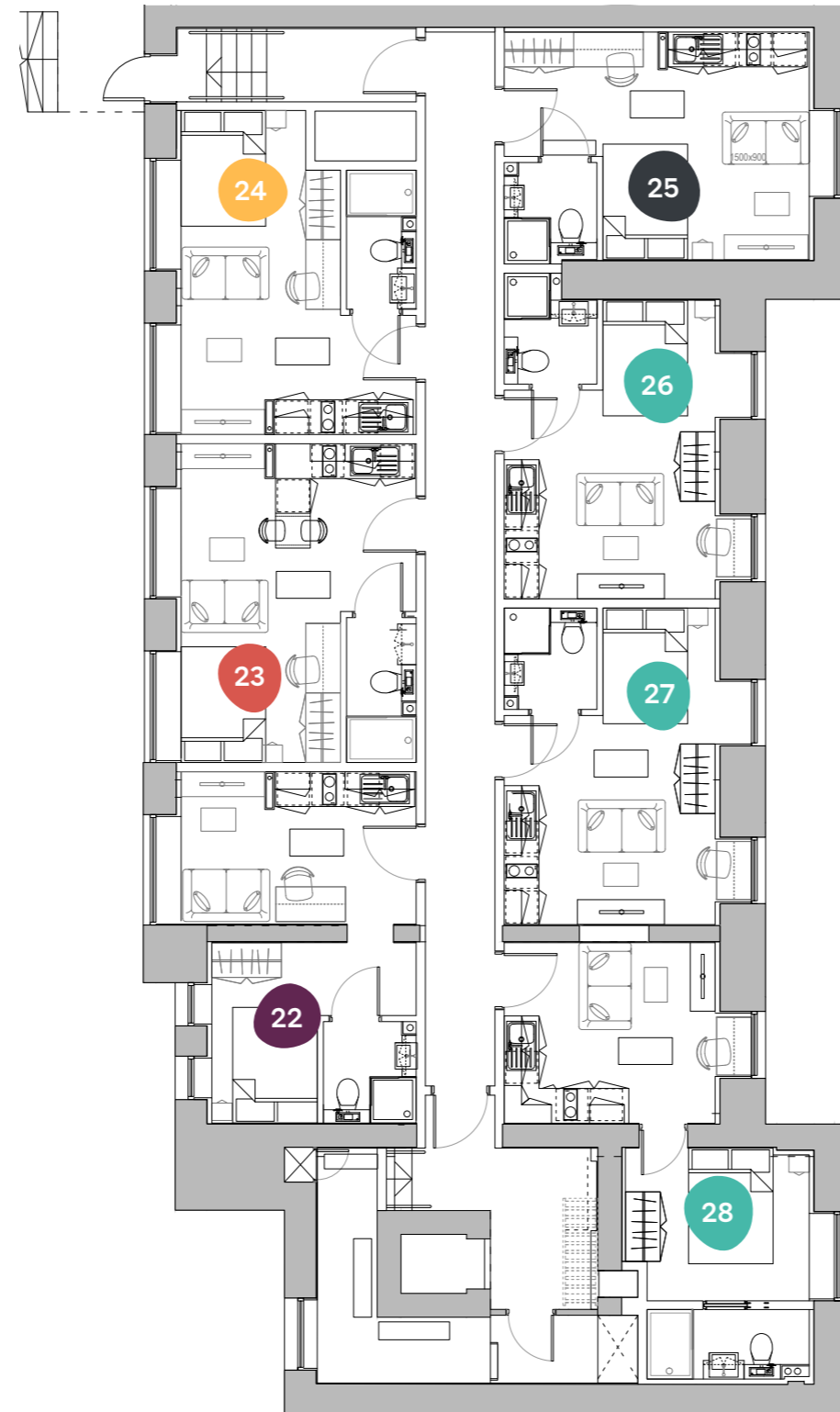
7 South Parade

4



4th Floor

7 South Parade, Leeds,
LS1 5BB



- Superior
- Deluxe
- Executive
- Premium
- Classic

Flat	Size (sqm)
22	23.06
23	22.31
24	21.09
25	20.75
26	20.68
27	21.38
28	25.01



Book online today at ypp.co.uk
info@ypp.co.uk | 0113 2444 666