



## 23 Hyde Terrace Floor Plans



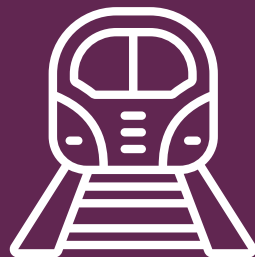
# The new way of living.

Located just off the popular Clarendon Road, this property is ideally located for easy access to the city centre and university campuses. Just a short walk from the buzz of Hyde Park, you will also be in the perfect place for summer, amongst the busy student atmosphere, full of shops, bars and

## Building features.



0.1km from  
University of Leeds



1.6km from  
train station



Utility bills  
included



Internet  
included



Popular  
student location



Great  
transport links

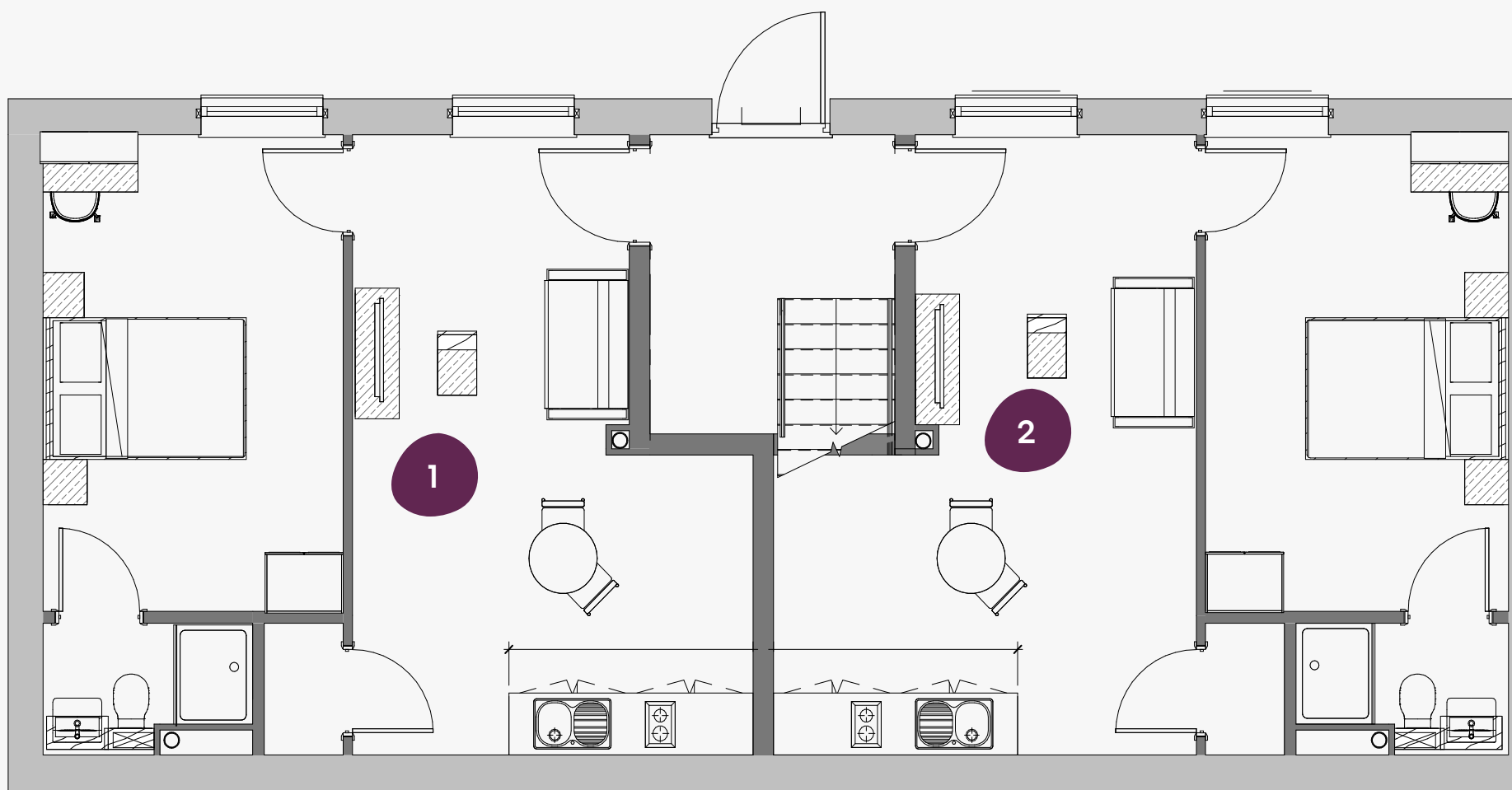


Secure  
code entry



Short walk  
to city centre

# 23 Hyde Terrace



LG



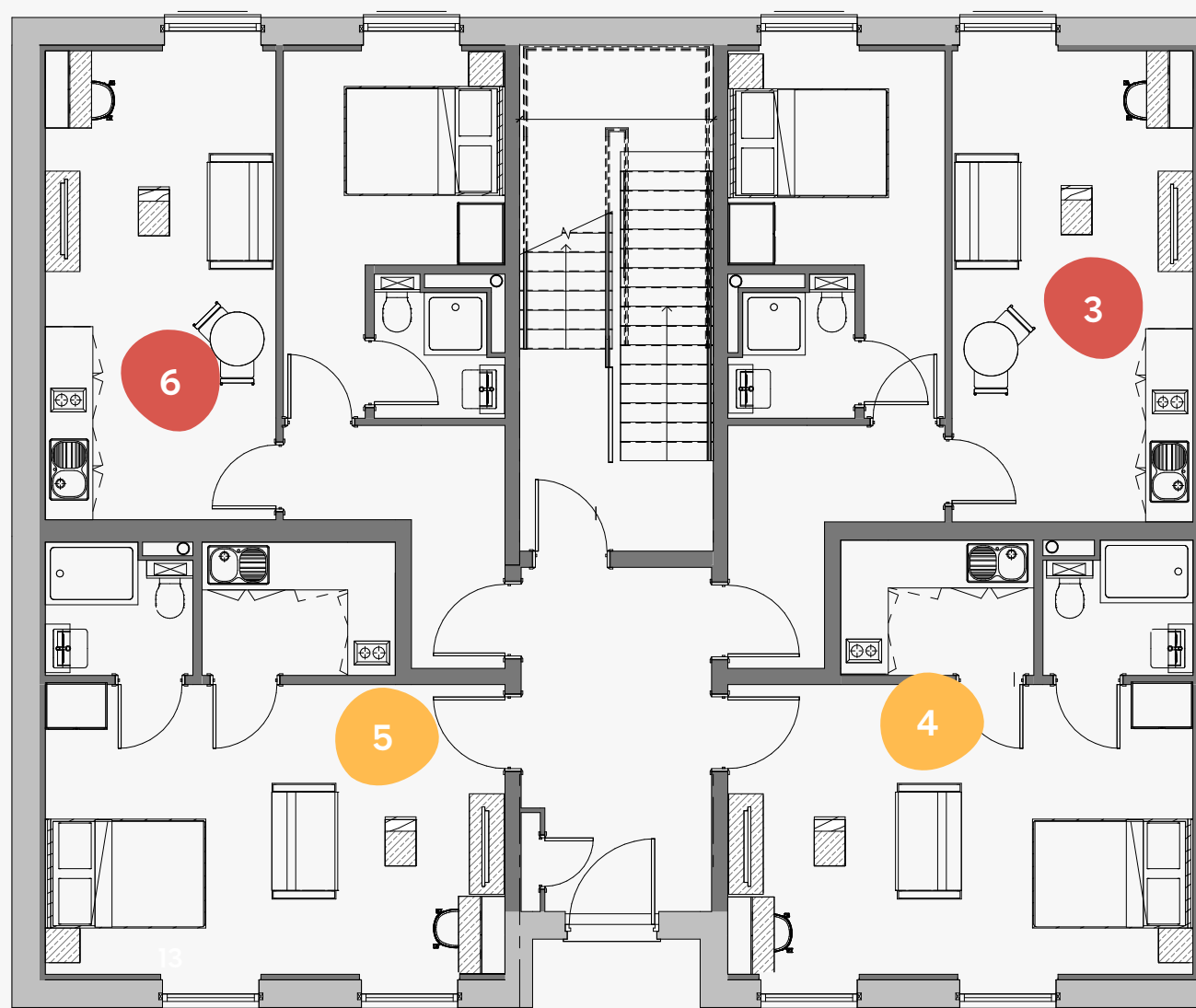
## Lower Ground

23 Hyde Terrace, Leeds,  
LS2 9BY

- Superior
- Deluxe
- Executive
- Premium
- Classic

Flat	Size (sqm)
1	43.0
2	43.0

# 23 Hyde Terrace



GF



## Ground Floor

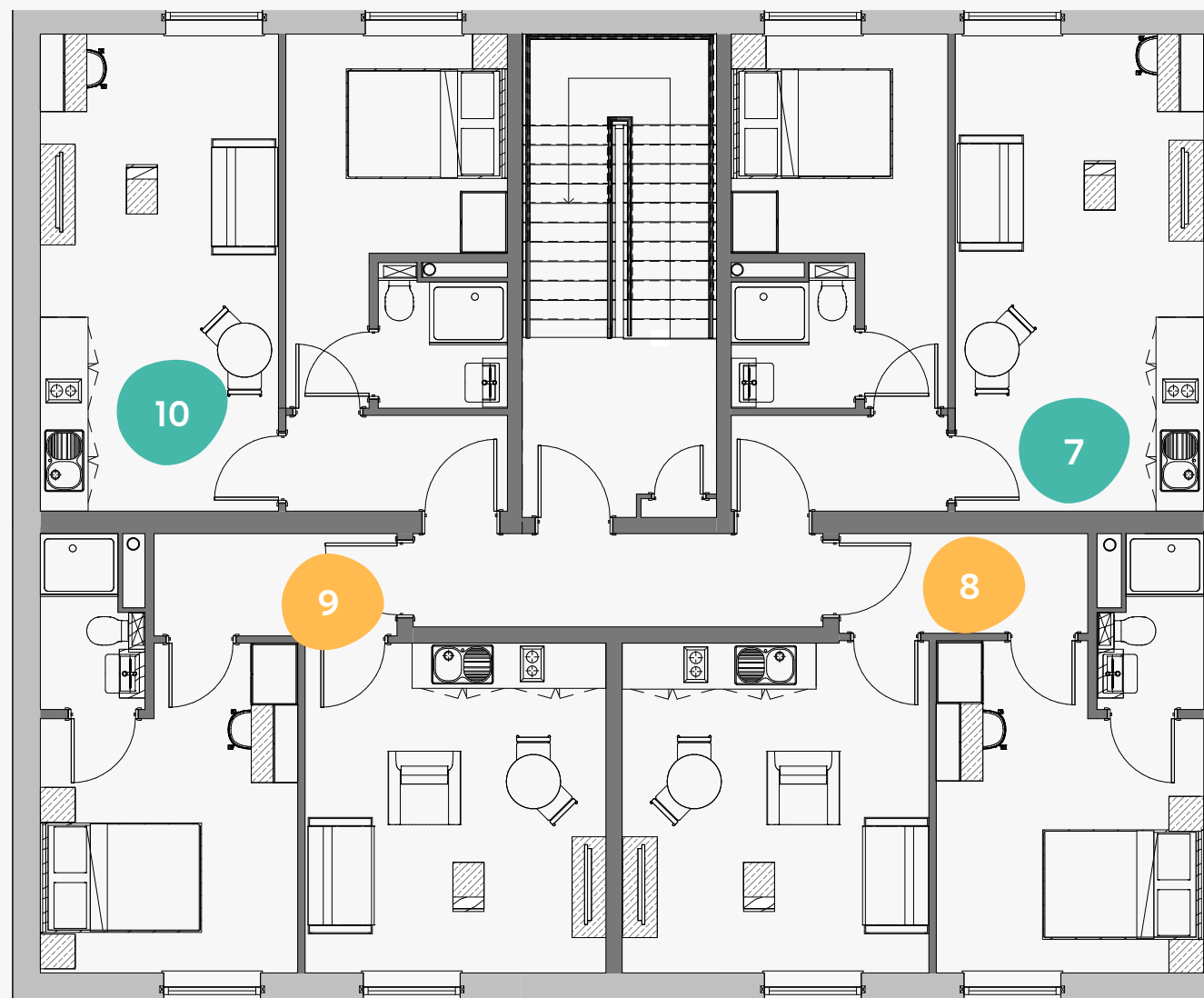
23 Hyde Terrace, Leeds,  
LS2 9BY

-  Superior
-  Deluxe
-  Executive
-  Premium
-  Classic

Flat      Size (sqm)

3	39.0
4	30.0
5	30.0
6	38.0

# 23 Hyde Terrace



1



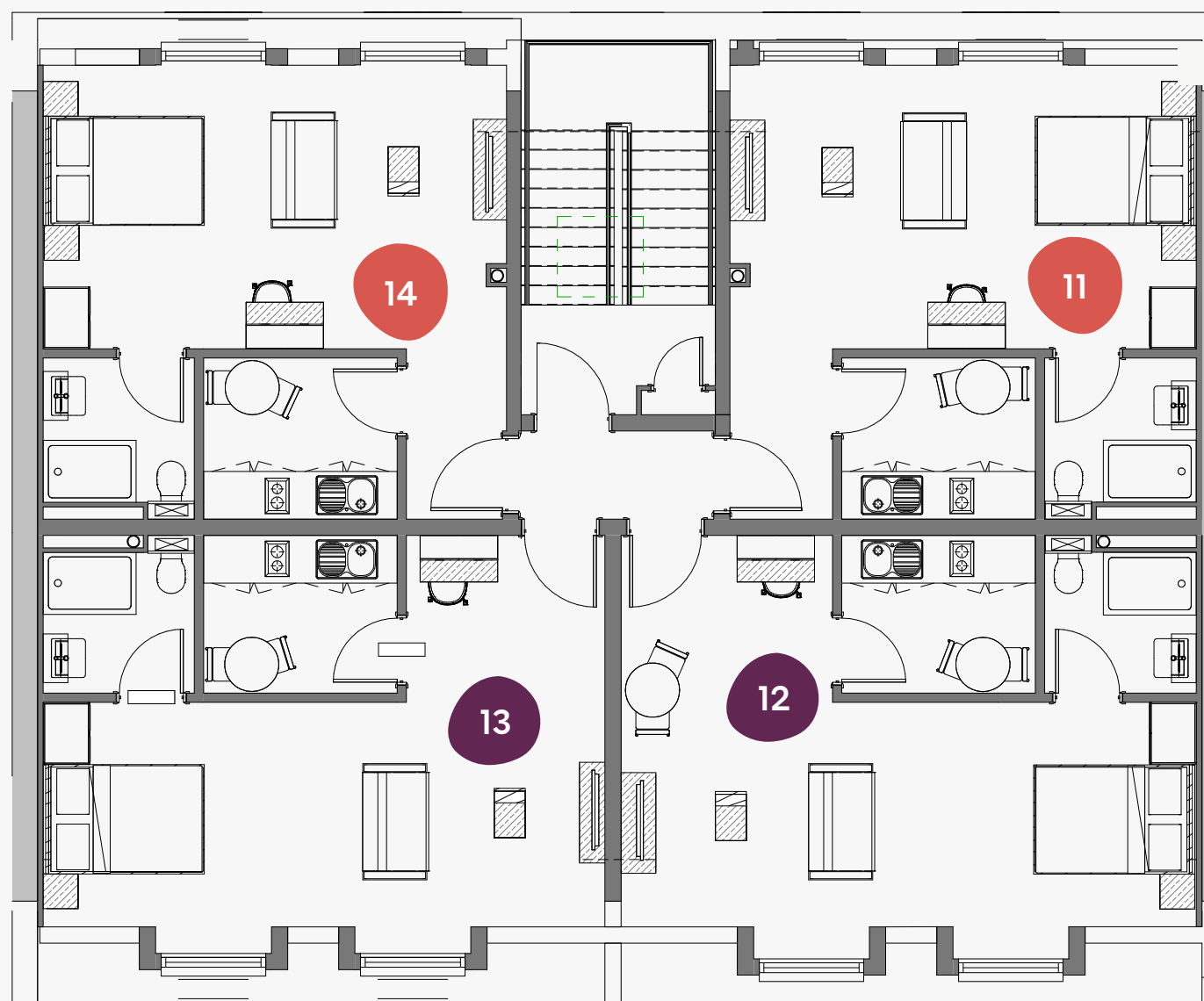
## First Floor

23 Hyde Terrace, Leeds,  
LS2 9BY

-  Superior
-  Deluxe
-  Executive
-  Premium
-  Classic

Flat	Size (sqm)
7	37.0
8	38.0
9	37.0
10	37.0

# 23 Hyde Terrace



2



## Second Floor

23 Hyde Terrace, Leeds,  
LS2 9BY

-  Superior
-  Deluxe
-  Executive
-  Premium
-  Classic

Flat	Size (sqm)
11	33.0
12	35.0
13	35.0
14	33.0





Book online today at [ypp.co.uk](https://ypp.co.uk)  
info@ypp.co.uk | 0113 2444 666