

The logo for YPP (Youth Policy Project) is a white lowercase 'ypp' inside a purple shield-like shape.

8 Blenheim Terrace

The new way of living.

If you want to live close to campus then it doesn't get much better than this! You can forget about walking back in the dark from your late night study sessions, because not only is it directly opposite the University of Leeds' Laidlaw Library, it's just a few steps from the Parkinson Building, making it the perfect choice for students!

Just up the road you'll find a tesco express, takeaways, cafes, and Leeds most popular sandwich shop, Bakery 164. Plus you'll be just a 10 minute walk to the city centre with a bus stop right outside for those rainy days. Head to Trinity Shopping Centre for a bit of retail therapy, watch a film at the unique Everyman Cinema or try out one of the city's many escape rooms.

Building features.



0.1km from
University of Leeds



1.4km from
train station



Short walk to city
centre

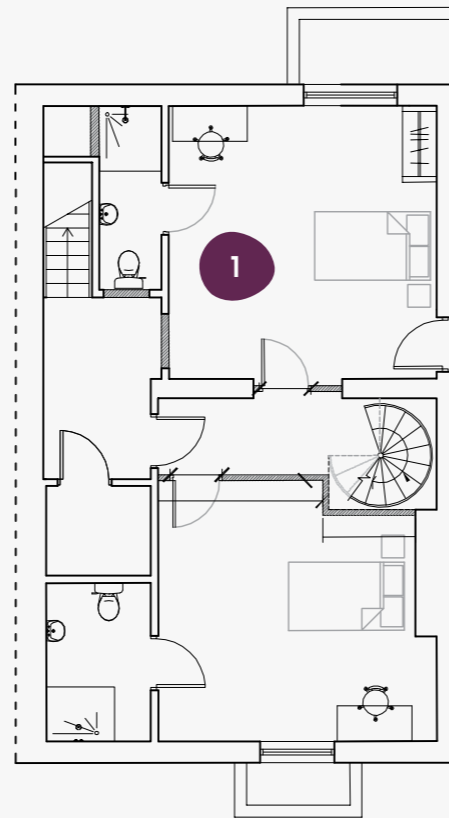


Great transport
links



Popular
student location

8 Blenheim Terrace



LG



Lower Ground

8 Blenheim Terrace,
Leeds, LS2 9HZ

Flat	Size (sqm)
1	112.0

8 Blenheim Terrace



G



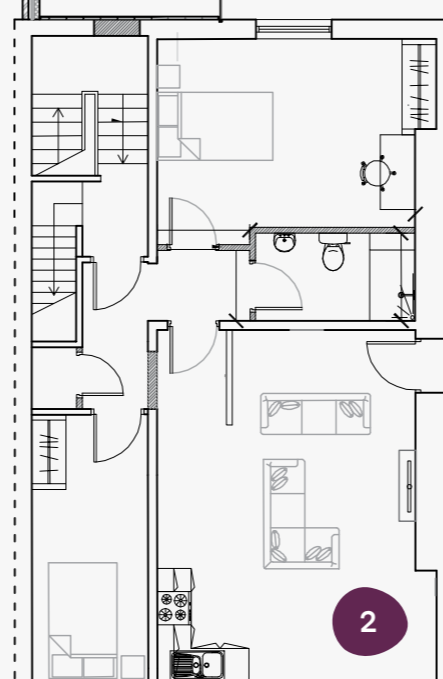
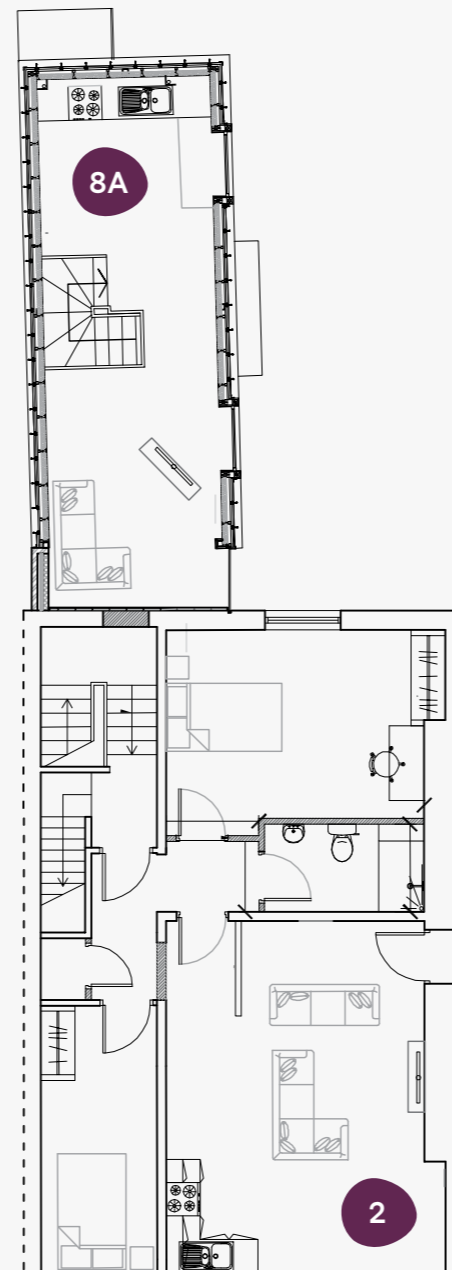
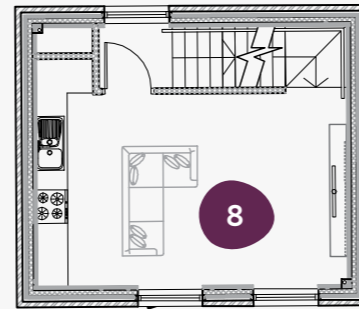
Ground Floor

8 Blenheim Terrace,
Leeds, LS2 9HZ

Flat Size (sqm)

1	112.0
8A	53.4
8	68.2

8 Blenheim Terrace



1

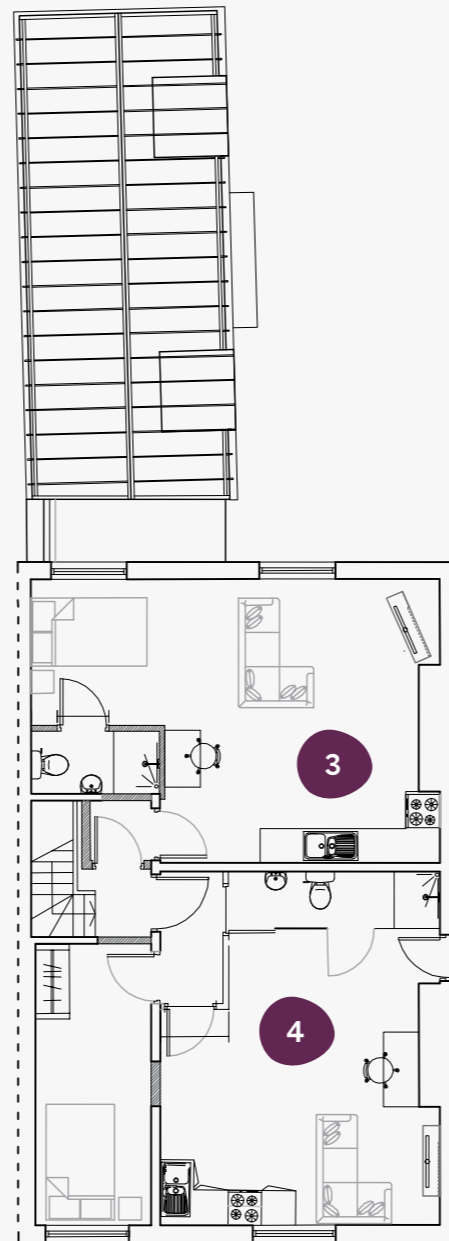
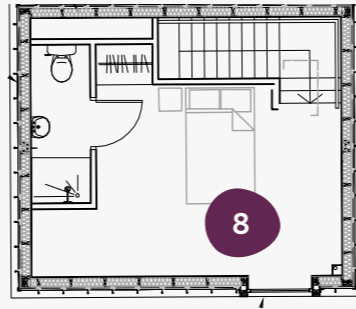


First Floor

8 Blenheim Terrace,
Leeds, LS2 9HZ

Flat	Size (sqm)
2	66.6
8A	53.4
8	68.2

8 Blenheim Terrace



2



Second Floor

8 Blenheim Terrace,
Leeds, LS2 9HZ

Flat	Size (sqm)
3	33.6
4	40.5
8	68.2



THE LEEDS ARTS CLUB
A highly influential forum for the advancement of politics, philosophy, art and literature from 1903. Ground-breaking exhibitions of the 1913 Post-Impressionist show and the 1917 Futurist Art in 1914. Famous speakers included G.B. Shaw and W.B. Yeats. 1903-1923

Book online today at ypp.co.uk
info@ypp.co.uk | 0113 831 4466