



George House Floor Plans

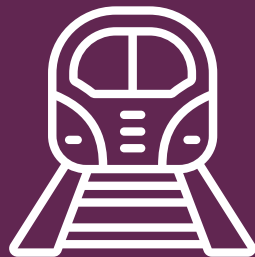
The new way of living.

Located on the edge of the city centre, George House sits on Piccadilly Court. Just off Fossgate, one of York's iconic cobbled streets, it has everything you could possibly need right on its doorstep. From pubs, bars, shops and restaurants, to attractions, parks and historic landmarks, this really is the perfect place if you want to see everything York has to offer.

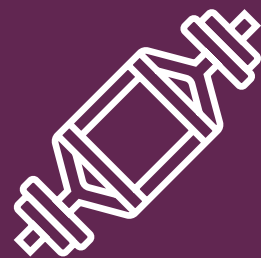
Building features.



1.2km from
University of York



1.6km from
train station



Free access
to nearby gym



Secure
code entry

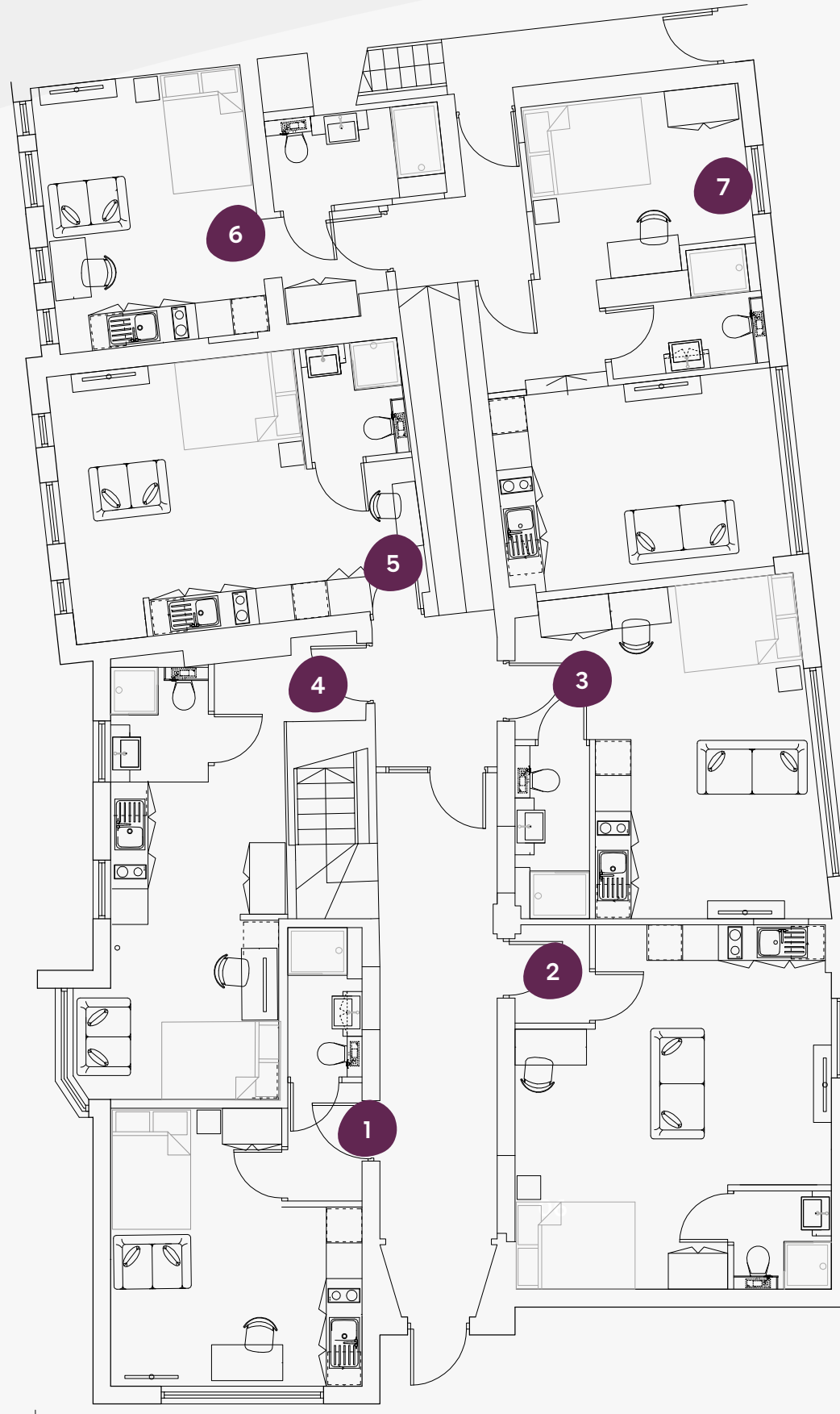


City centre
location



Bike store

George House



G



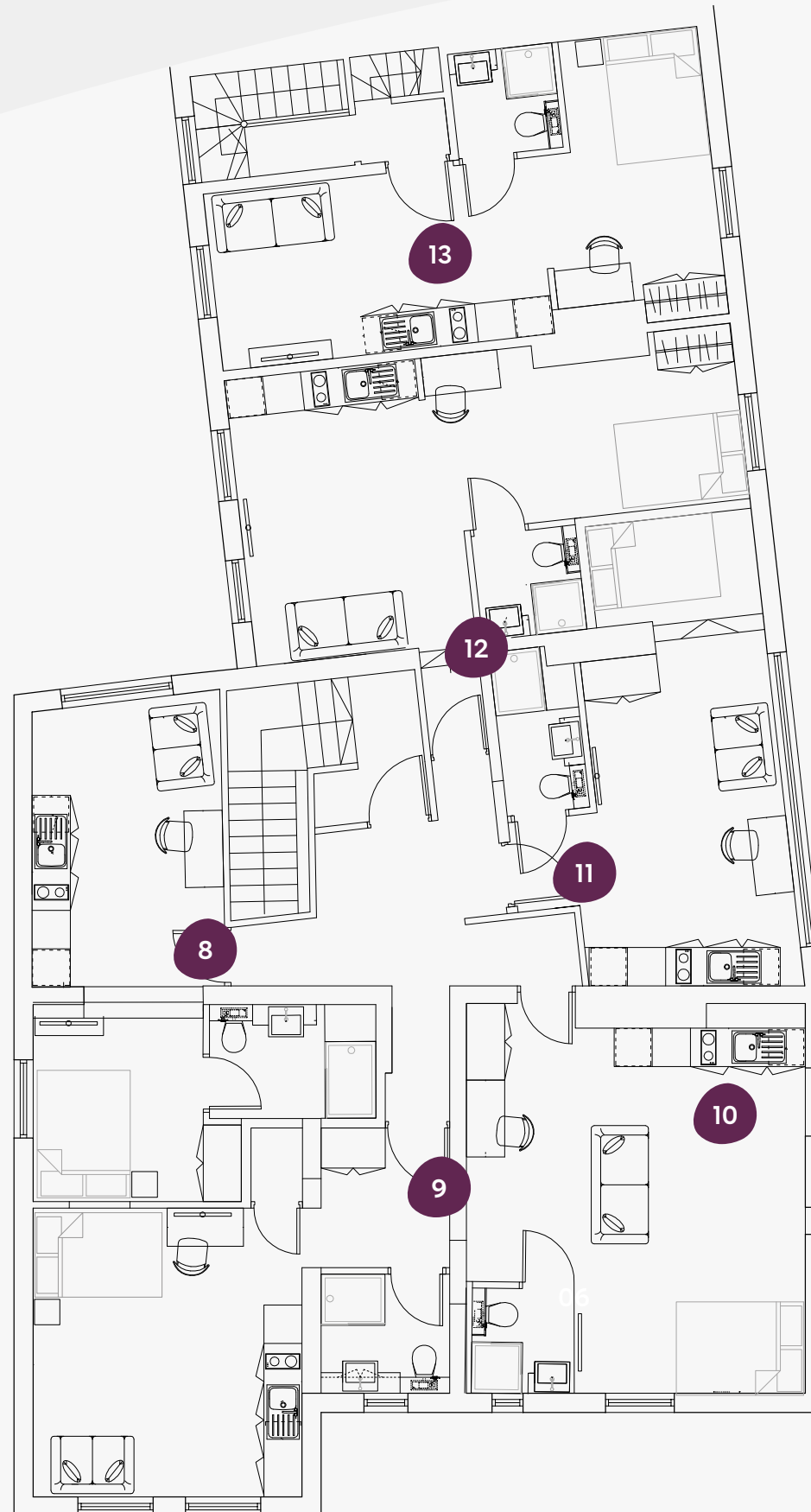
Ground Floor

George House, Piccadilly Court, York, YO1 9AB

Flat Size (sqm)

1	23.4
2	32.3
3	27.6
4	24.4
5	26.9
6	24.3
7	35.3

George House



1

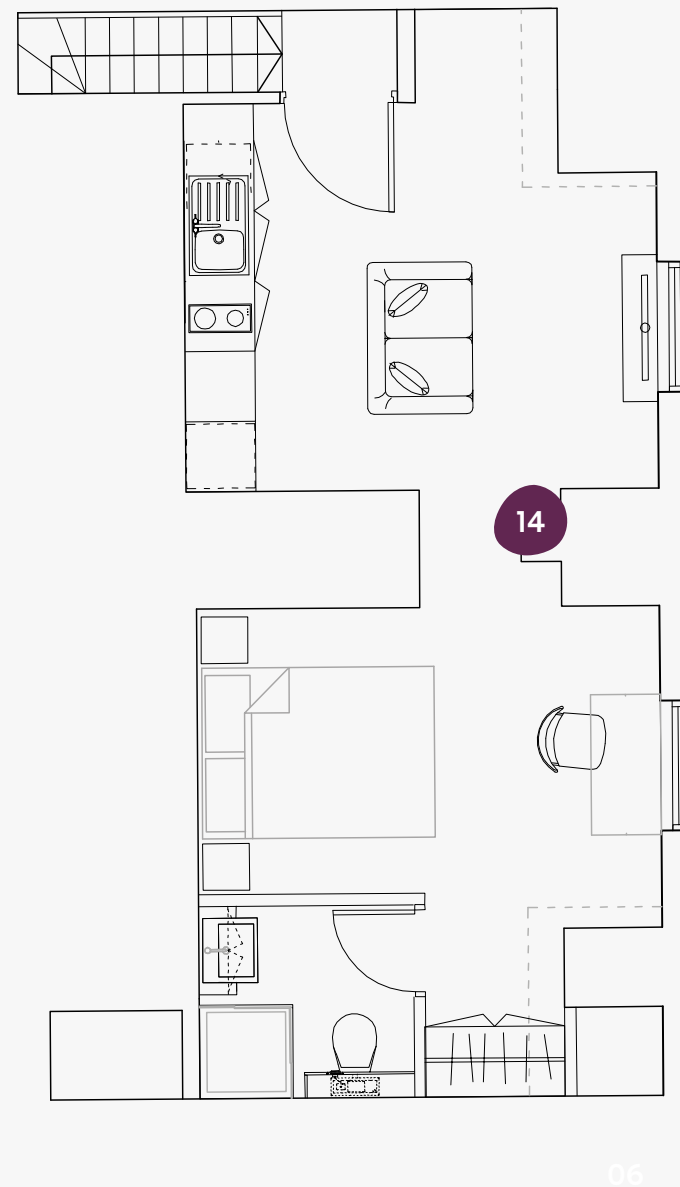


First Floor

George House, Piccadilly
Court, York, YO1 9AB

Flat	Size (sqm)
8	27.7
9	28.7
10	31.0
11	26.2
12	31.9
13	28.6

George House



2



Second Floor

George House, Piccadilly
Court, York, YO1 9AB

Flat	Size (sqm)
14	29.2



Book online today at ypp.co.uk
info@ypp.co.uk | 01904 627 065